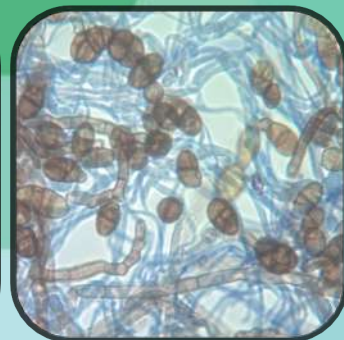
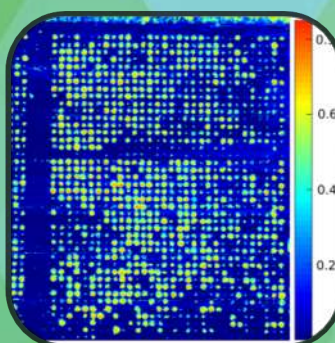


# Practical Course Plant Pathogen Diagnostics



## ...From Symptoms to Sequence



We would like to invite PhD students, researchers, agronomists, farm managers and all members of public interested in plant diseases to attend a one day workshop in the “Garden of England”

**We will cover a range of plant pathology skills and knowledge:**

Theoretical and practical demonstrations of core plant pathogen diagnostics skills

Diseases on annual and perennial crops

The latest developments in molecular detection and classification of pathogens

High throughput detection and imaging tools for large scale environmental monitoring

**Places are limited. For further information and registration visit**  
<http://bit.ly/PPD6Nov> or contact [diagnostics.course@emr.ac.uk](mailto:diagnostics.course@emr.ac.uk)

**Where:** NIAB EMR, East Malling, Kent **When:** Tuesday 6<sup>th</sup> November 2018  
**Cost:** £65 (including lunch and refreshments)

