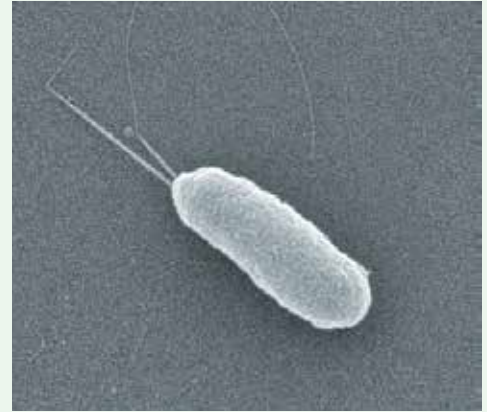


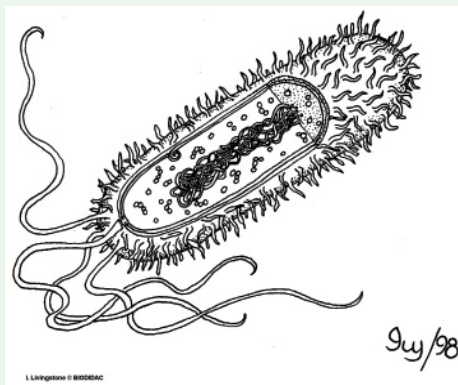
Bacteria

- Often enter plants through holes on the plant surface.
- Often have long tails that help them swim through the soil towards plants.
- Can use toxic chemicals to kill off parts of the plant. This helps them to infect and multiply inside the plant.



Pseudomonas syringae bacteria have:

- Swimming tails: help the bacteria swim towards plants. They can also swim around on the surface of plants until they find a way in!
- Ice weapons: some forms of these bacteria can form ice crystals which pierce plants, creating wounds for the bacteria to enter through.
- Injections: these bacteria are able to inject proteins into plant cells using a special pipe. These proteins help the bacteria to grow inside the plant!



Created by the British Society for Plant Pathology (2013)

Images: 1. Image of *P. syringae* by Robert Jackson, University of Reading, 2. Tomato speck disease: Chris Smart, NYSAES, Geneva NY, Wikipedia, 3. Diagram of *Pseudomonas syringae* by I. Livingstone. Copyright iodidac.