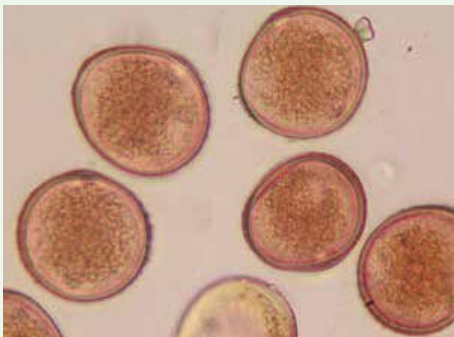


Fungi

- You might recognise fungi - some of them have tasty mushrooms but some fungi are harmful.
- Fungi can attack plants and even destroy the largest trees.
- Plant attacker fungi often live in the soil. They attack plant roots using tubes, which 'steal' water and food from the plant.
- Spores: fungi use spores to spread between plants. In the winter spores are smaller and have thick walls to help them survive the cold, wet weather.



Which spores are summer and winter?



- Tubes: these help fungi to poke holes into plants and suck out the plant's food and water.



Created by the British Society for Plant Pathology (2013)

Images: 1. Credit Stu Phillips, 2. Credit J.Marqua, Wikipedia, 3. Image of *Uromyces viciae-fabae* Uridiospore by © Copyright Malcolm Storey 2 011-21126, 4. Image of *Uromyces viciae-fabae* Teliospore by Michael Shaw, University of Reading.