



British Society for Plant Pathology

Our Mission

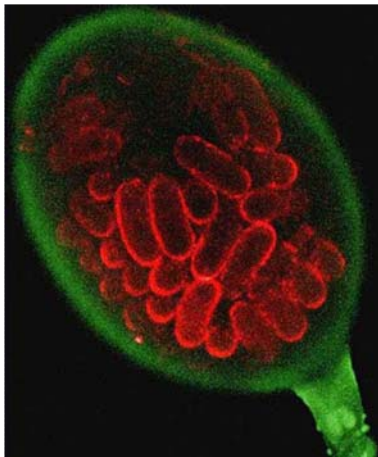
To enable plant pathologists worldwide to communicate with their peers on all aspects of plant pathology



Black Sigatoka disease of banana¹

The Society

- Is a registered charity
- Supports training
- Promotes plant pathology to the wider community



Female nematode (*Globodera pallida*)²

Membership benefits

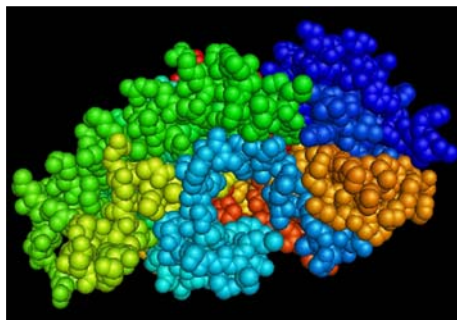
- Travel awards
- Conference funds
- Visiting fellowships
- Student bursaries
- Plant pathology promotion fund
- Members database



Phytophthora fragariae var. *rubra*³

Our Journals:

- Plant Pathology
- Molecular Plant Pathology
- New Disease Reports



Modelling fungicide resistance targets⁴

Keep in touch

www.bspp.org.uk

Uniting Professionals Worldwide

Thanks to our members for the images: Eric Boa¹, Vivian Blok², Alexandra Schlenzig³ and Fran Lopez-Ruiz⁴.